

1medical

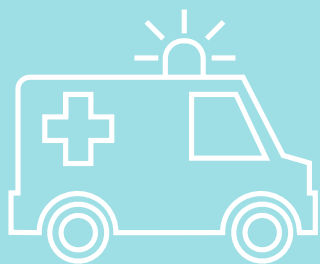
Positions for Advanced
Trainees and New Fellows

Emergency Medicine

1Medical have partnered with ACE the ACEM to provide a specialist placement service to assist doctors during their training and post fellowship periods.

We understand this period of your career can be challenging, and we can assist by finding you sustainable part time locum or permanent work options to allow you to balance your study and maintain an income.

Working via 1Medical we can help you explore the country as a locum, find your first permanent position post-fellowship or simply to increase your income before the next stage of your career.



Achieve a livable income via part time locum work allowing you to create a work life balance for your study and personal life.

- The best options across the entire market including Outer Metro
- Flexible locum options across the country
- Part-time permanent positions
- FIFO rotational options on either a locum or permanent basis
- Advanced roster patterns allowing you to manage your time and income
- Pay rates of \$2,500- \$3,300 per day worked
- Weekly pay run, full credentialing service, travel booking etc
- Explore the country, see the sights and find your future permanent post

For more information or to have a confidential discussion around options specific to your circumstances, please get in touch with Ben Lepke today.

To view vacancies visit **1Medical Job Board** and select Emergency from the drop down.

Benjamin Lepke

Manager – Emergency Medicine

p: +61 291 382 071 m: +61 403 585 665 e: ben@1medical.com.au

Level 15, 1 Castlereagh Street, Sydney NSW 2000

